



Corporate Profile

Sojitz Thailand

Sojitz Corporation

Sojitz Corporation

// Sojitz at a Glance

■ Corporate Statement

The Sojitz Group creates value and prosperity by connecting the world with a spirit of integrity.

■ Sojitz Group Slogan

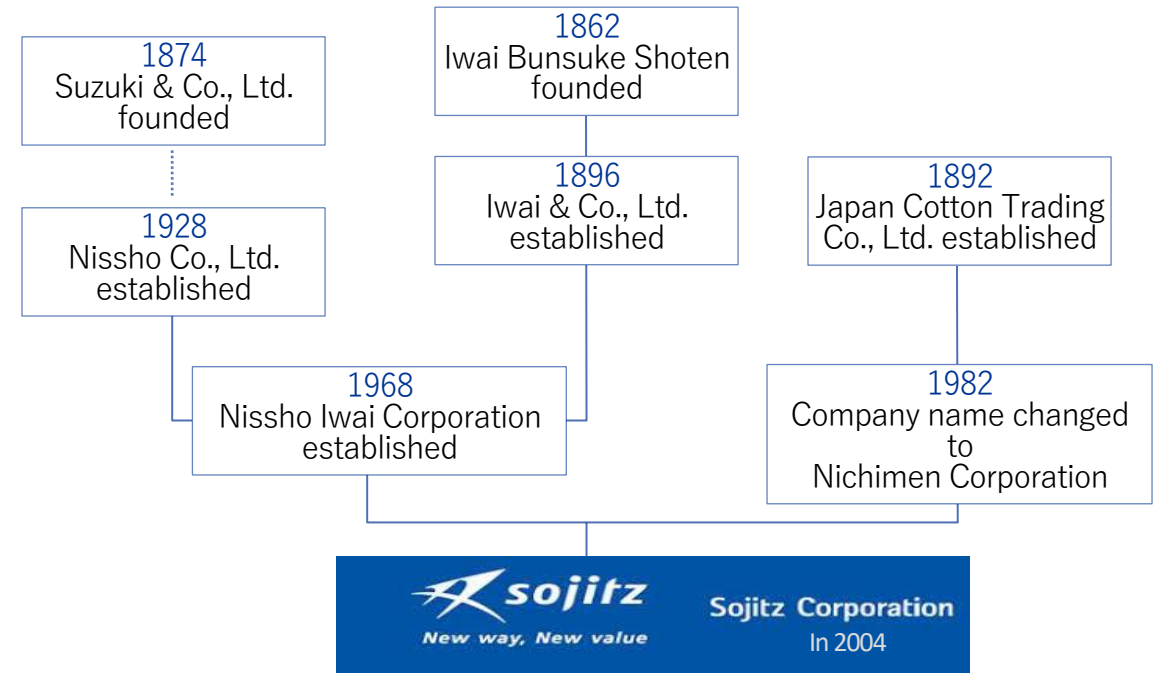
New way, New value

■ Group Symbol



■ The History of Sojitz

Sojitz Corporation was formed out of the union of Nichimen Corporation and Nissho Iwai Corporation, both companies that boast incredibly long histories. For more than 150 years, our business has helped support the development of countless countries and regions. Today, the Sojitz Group consists of approximately 400 subsidiaries and affiliates located in Japan and throughout the world, developing wide-ranging general trading company operations in a multitude of countries and regions.



Sojitz at a Glance

■ Corporate Profile

Established	In 2004
Capitalization	160,339 million JPY 1,114 million USD 36,185 million THB
President & CEO	Kosuke Uemura
Head Office	Tokyo, Japan
URL	https://www.sojitz.com/en
Stock Exchange Listings	Tokyo Stock Exchange
Credit Rating	A (Stable, JCR) BBB (Stable, S&P)
Number of Branches & Offices	Domestic (Including the Head Office): 5 Overseas: 84
Number of Subsidiaries and Affiliates	Domestic: 132 Overseas: 337
Number of Employees	Non-consolidated: 2,486 Consolidated: 25,118

■ Performance (As of March 31, 2025)

Total assets

3.1 trillion JPY
215 billion USD
700 billion THB

Total equity

969 billion JPY
6.7 billion USD
218 billion THB

Profit for the year

110.6 billion JPY
767 million USD
24.9 billion THB

Exchange rate as of 2 Jul 2025 : 1 USD = 144.08 JPY / 1 THB = 2.25 JPY



■ ● Head Office ● Office ● Group company ● Branch

// Business Overview

■ Sojitz's 7 business divisions engage in a wide variety of businesses around the world.

<p>Automotive Division</p> <ul style="list-style-type: none"> ● Distributor business ● Dealership business ● Auto-financing business ● Service (quality inspection services, etc.) 	<p>Chemicals Division</p> <ul style="list-style-type: none"> ● Chemical products ● Methanol ● Rare earths ● Plastic resins ● Environment and life science ● Recycling
<p>Aerospace, Transportation & Infrastructure Division</p> <ul style="list-style-type: none"> ● Commercial aircraft ● Sales agent and aircraft asset business ● Business jet services ● Airport management ● Transportation infrastructure and railway business ● Marine vessel business ● Industrial park and urban infrastructure business 	<p>Consumer Industry & Agriculture Business Division</p> <ul style="list-style-type: none"> ● Fertilizer Business ● Animal Feed and Livestock Business ● Domestic Agriculture Business ● Biomass Fuel Business ● Building Material Business ● Papermaking Business
<p>Energy Solution & Healthcare Division</p> <ul style="list-style-type: none"> ● Healthcare Business ● Energy Saving Service Business ● Renewable Energy Businesses ● Downstream Energy Business ● Gas-Fired Power Generation Businesses 	<p>Retail & Consumer Service Division</p> <ul style="list-style-type: none"> ● Food distribution (production, wholesale, distribution, retail) ● Retail business ● Shopping center management ● Domestic real estate ● Brand and consumer products
<p>Metals, Mineral Resources & Recycling Division</p> <ul style="list-style-type: none"> ● Metal resource interests ● Coking coal and steel products businesses ● Circular economy 	



Sojitz Thailand

■ Corporate Profile



President & CEO

✓ Toyohiko Satsuka



Capital

✓ THB 503,000,000
(USD 15,000,000)



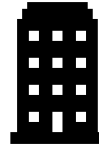
No. of Employees

✓ 120 (Japanese -13 and Thai – 107)



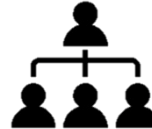
Location

✓ 19th Floor, Q.House Lumpini Building,
1 South Sathorn Road, Tungmahamek,
Sathorn, Bangkok 10120 Thailand.

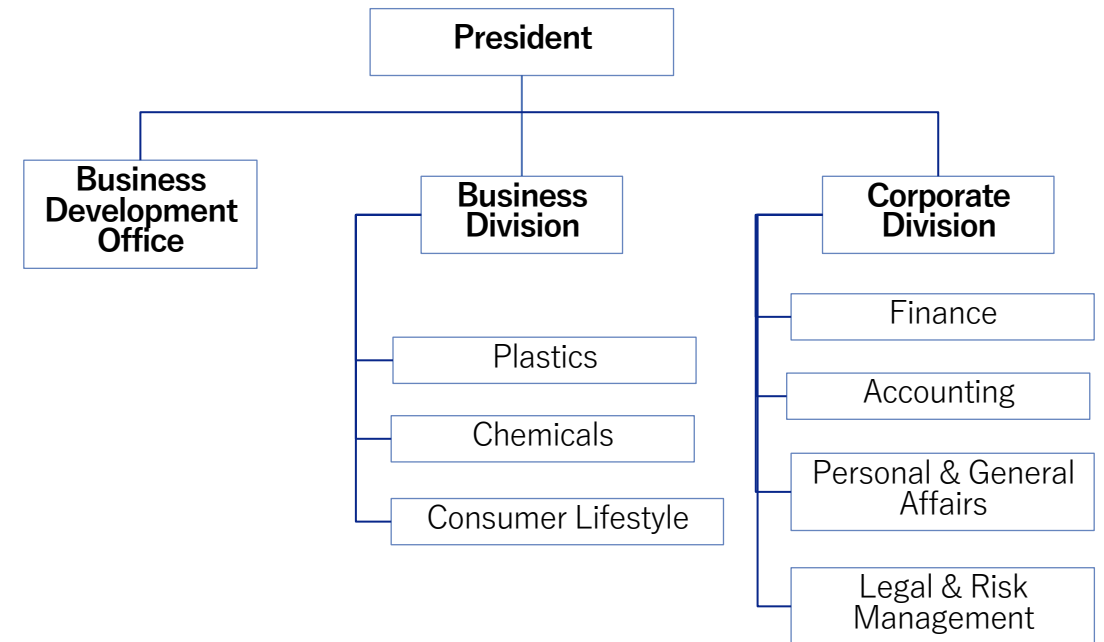


History of Sojitz in Thailand

✓ Sojitz (Thailand) Co., Ltd, a subsidiary of Sojitz Corporation, has operated business in Thailand more than 85 years. It was officially established in 2004 through the merger of Nichimen (Thailand) Co., Ltd. and Nissho Iwai (Thailand) Ltd. Part.



Organization Chart



Business Activities

Plastics Department

- ❖ Plastic Resin Materials
 - Resins for Molding
- ❖ Electronics materials
 - CCL & PCB & EMS
- ❖ Bio-Plastics
 - Green Polyethylene (GPE)
- ❖ Barrier Packaging Materials
- ❖ Recycled Plastics



Consumer Lifestyle Business Department

- ❖ Foods & Agriculture Business
 - Grain & Feed : Wheat flour, Premix, Tapioca Starch, Sugar, Animal feed
 - Food : Sea food, Meat, Processed food, Confectionery, Ingredient, Oil, Plant based meat
 - Developing agriculture platform
- ❖ Lifestyle Business
 - Developing distribution network of consumer goods Greater Mekong Sub-region.

Chemicals Department

- ❖ Chemical Materials
 - Monomers for Coating, Adhesive, Polyester and others
 - Additives for Coating, Adhesive, Rubber and Polymer
 - Phenol, Bis-Phenol A, Phenol derivatives and Phenolic resin
 - Grease, Cutting Oil and Other lubricating oils
 - Industrial salt and Chlor-alkali products
 - Raw materials for Modified starch, Lithium-ion Battery, Glass, Detergent and Sanitary goods
- ❖ Natural products
 - Palm residue, Used cooking oil and Bio chemicals



Investment Activities

Consumer Goods & Agribusiness

Thai Central Chemical Public Company Limited
 Est. 1973 - The largest manufacturer and distributor of chemical Fertilizer in Thailand



MC Agro-Chemicals Co., Ltd
 Est. 1988 – The company specializes in the import, repackaging, and formulation of agrochemicals for the agricultural market



Sojitz Kaset Dee-X Co., Ltd
 Est. 2024 – Newly established company for agricultural platform business



Automotive

AUTRANS (Thailand) Co., Ltd
 Est. 1998 - Automobile parts supply chains: Logistics, Import, Export, Engineering, Sub-Assembly and Manufacturing



Chemicals & Plastics

Thai Matto NS Co., Ltd.
 Est. 1997 - the manufacturing of synthetic resins, plastics materials, and non-vulcanizable elastomers.



Thai Takagi Seiko Co., Ltd
 Est. 2006 - The manufacturer of automotive plastics parts and mold



N.I.M. Co., Ltd.
 Est. 1974 - A leading operator of liquid chemical storage tank terminal operation and rental services



Srithai Miyagawa Co., Ltd.
 Est. 1988 - A manufacturer of molds for plastic injection and plastic parts.



IRPC A&L Co., Ltd.
 Est. 1996 – The company specializes in the production of Acrylonitrile Butadiene Styrene (ABS) resin, a material highly demanded in the automotive and electronics industries



Thai GCI Resitop Co., Ltd
 Est. 1990 - The manufacturer and distributor of Phenolic Resin in Thailand



Muramoto Electron Thailand PCL (METCO)
 Est. 1987 - The integrated electronics parts and products manufacturer for various industries



Pla Matels (Thailand) Co., Ltd
 Est. 2012 – The company deals with high-value-added plastic materials along with products made of synthetic resin



Kyodo Yushi (Thailand) Co., Ltd
 Est. 2018 - A leading manufacturer of lubricants, especially grease, metal and machine oil

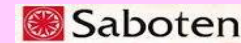


Retail and Consumer Services

Jalux Asia Ltd
 Est. 2001 – Import and sell Japanese fresh products and foods through the JALUX group network as well as exporting specialty Thai product



President Green House Foods Co., Ltd
 Est. 1973 - Japanese tonkatsu restaurant chain



FB Food Service (2017) Limited
 Est. 2017 – The company provides service for OEM business of various types of Ready-to-cook (RTC) and Ready-to-eat (RTE) products



Fuji Nihon Thai Inulin Co., Ltd.
 Est. 2012 – The first company to produce Inulin fiber from sugar in the world



Metals, Mineral Resources & Recycling

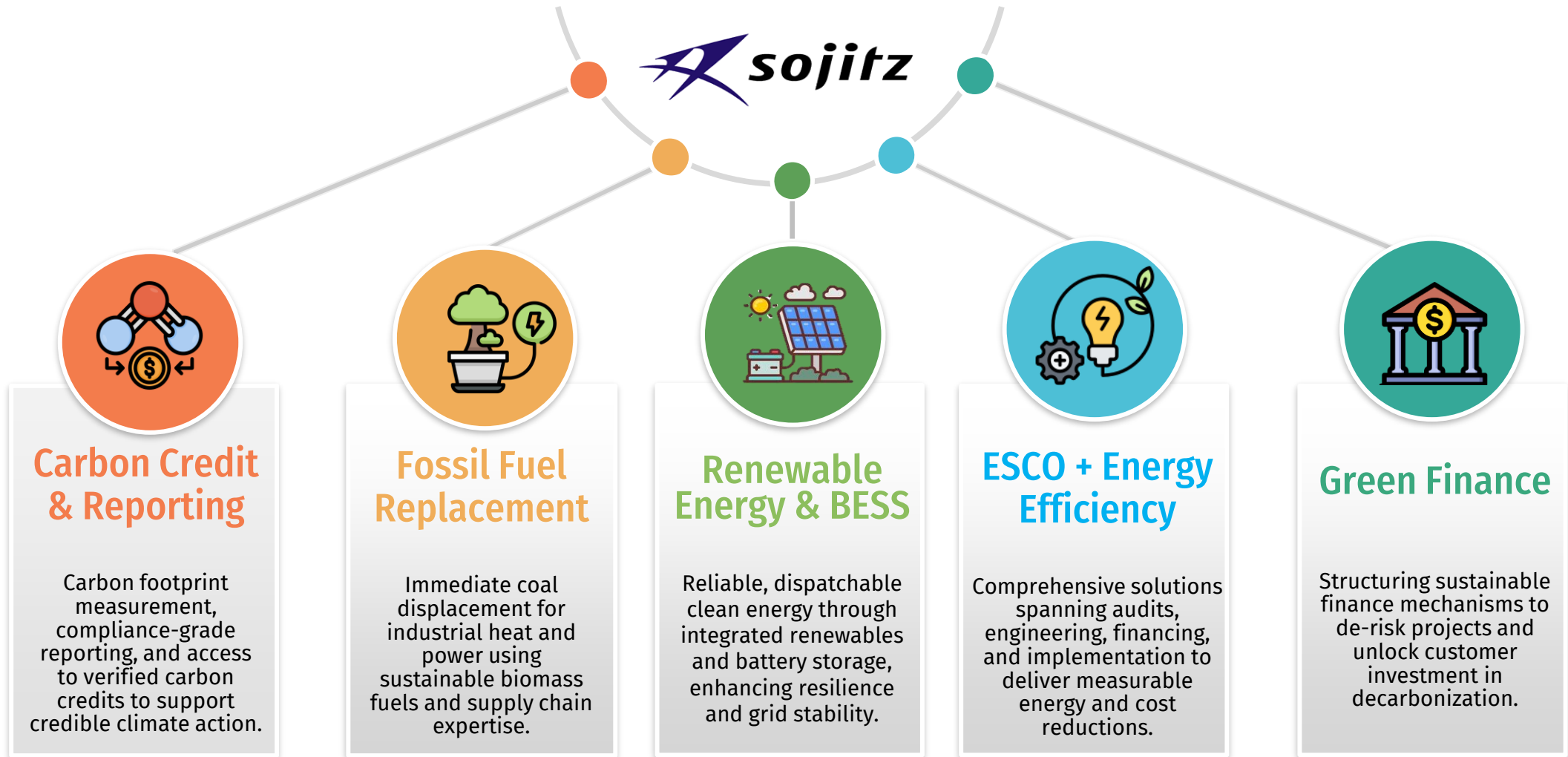
Metal One (Thailand) Co., Ltd
 Est. 2003 – The company engages in the sale, wholesale, stock operation, and import and export in various steel products.



Kunimine (Thailand) Co., Ltd
 Est. 2015 - The 'Bentonite' manufacturer as raw material for automobile, cosmetics, and medical products.

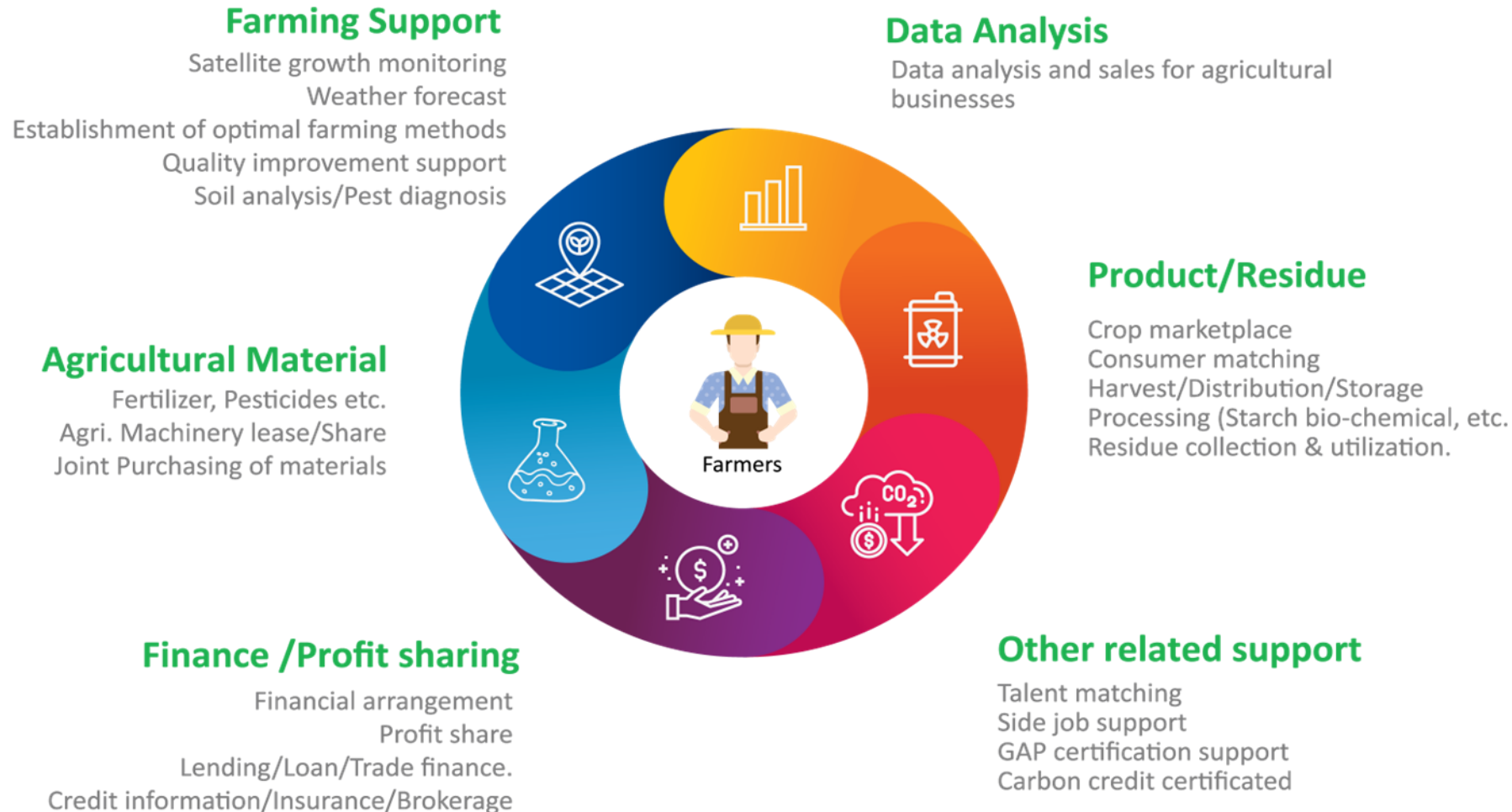


“Decarb-as-a-Services” Business : End-to-End decarbonization solutions



■ Agricultural-Platform

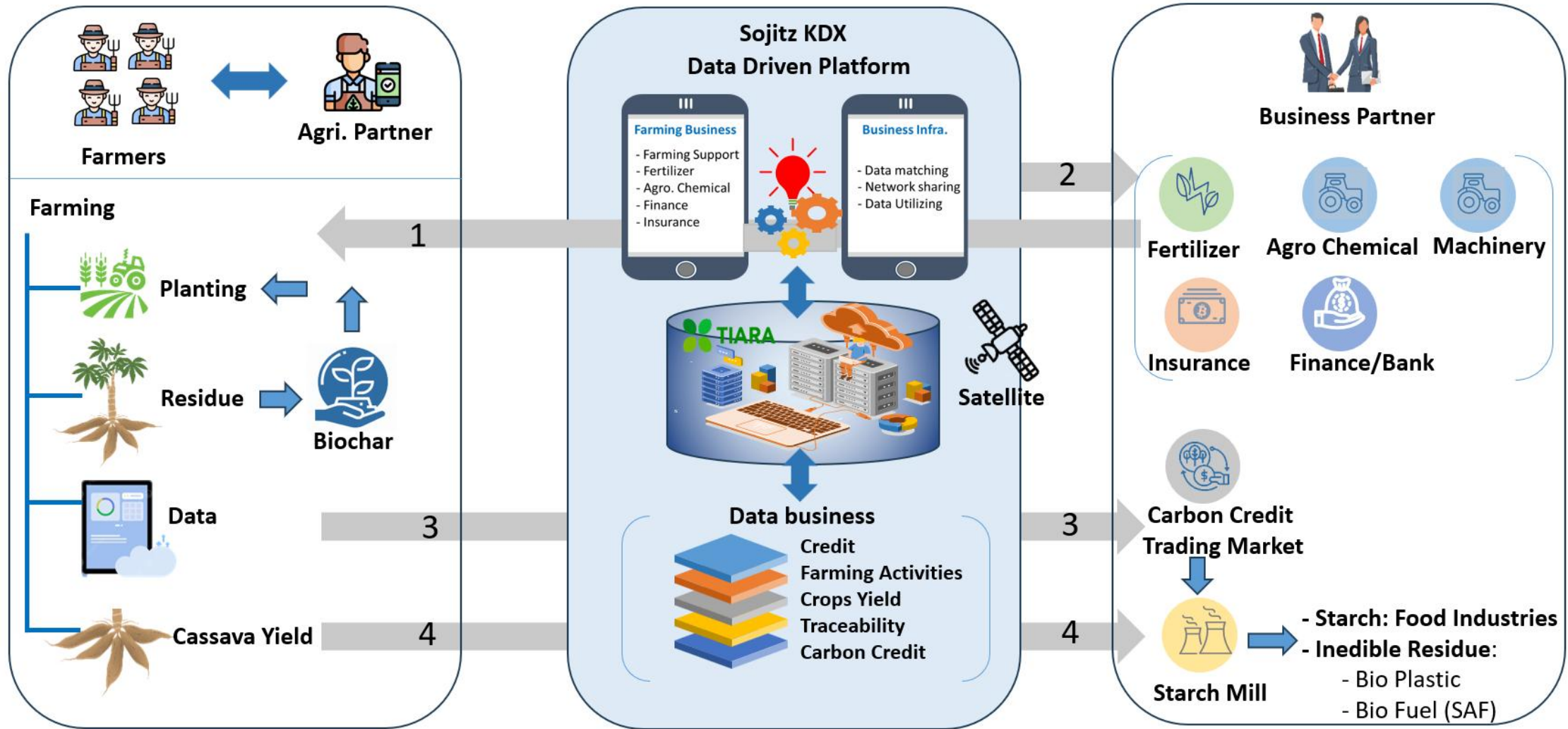
A platform business strategy that offers a **"place"** and **"system"** to link various users and businesses is the goal. In order to improve farmers' prosperity and achieve sustainable agriculture, KDX will create a **data-driven platform** company that connects more farmers with data.



Sojitz Kaset Dee-X (KDX)



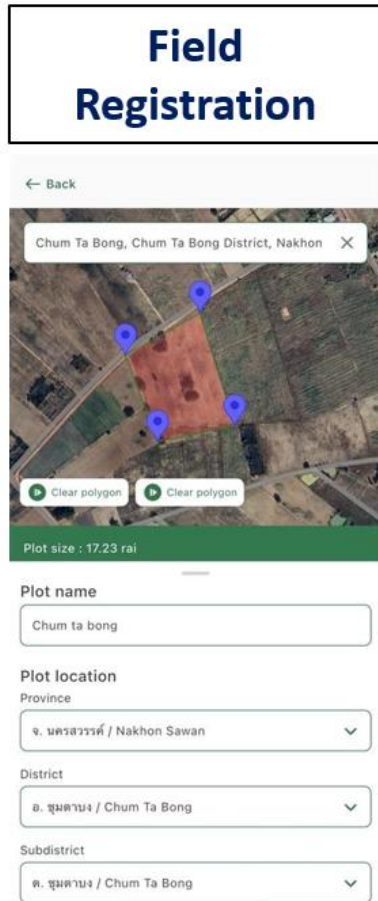
Agricultural-Ecosystem towards a sustainable supply chain



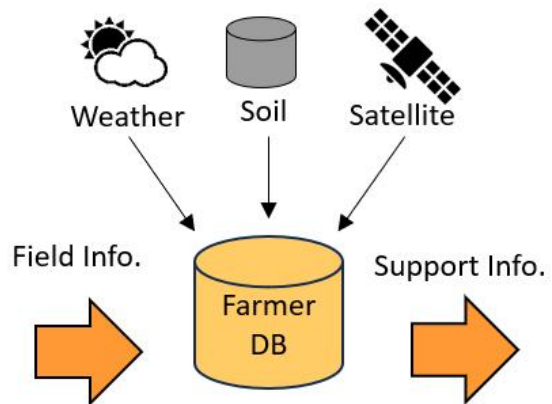
KDX-Connect Application

Provides agricultural support functions necessary to "increase farmers' income."

- By simply registering a field, farmers can access agricultural support functions such as soil information and weather forecasts.
 - Guides users to Profit Sharing and Trade Finance services for customized agricultural advice and financial support.
- In the initial launch phase, it will be utilized as a promotional tool to raise awareness of agricultural support services.

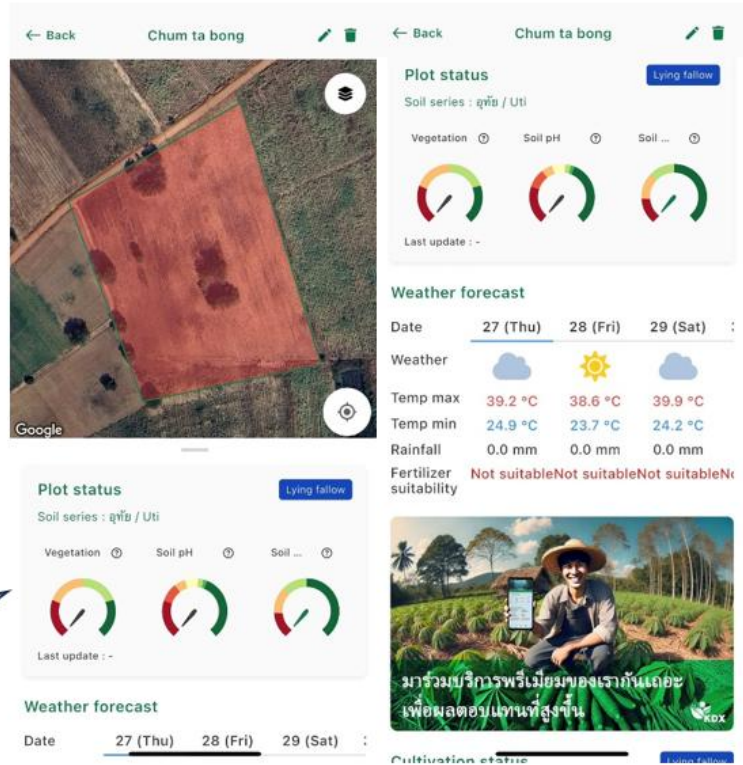


Data Collection



The agricultural support functions are updated periodically based on farmers' needs and progress

Agricultural Support



Guide to PS/TF

Introduction Premium service



Sustainability Certification : ISCC EU & ISCC PLUS & PEFC



Certificate
according to the Renewable Energy Directive (RED II)
(Directive (EU) 2018/2001 on the promotion of the use of energy from renewable sources (recast))
Certificate Number: EU-ISCC-Cert-DE100-11891125
SGS Germany GmbH
Europa Allee 12, D-49685 Emstek
certifies that
Sojitz (Thailand) Co., Ltd.

19th Floor, Q.House Lumpini Building, South Sathorn Rd., Tungmahamek, Sathorn 1
10120 Bangkok
THAILAND

complies with the requirements of the certification system
ISCC EU
(International Sustainability and Carbon Certification)
and the requirements of the RED II.

Place of the audit:
see above

This certificate is valid from 09/04/2025 to 08/04/2026

The site of the system user is certified as:
trader

Emstek, 09/04/2025
Place and date of issue


Stamp, Signature

The issuing Certification Body is responsible for the accuracy of this document.
Version / Date: 1 (no adjustments) / 09/04/2025



This document is issued by the Company subject to its General Conditions of Service (www.sgs.com/terms). Attention is drawn to the limitations of liability, indemnification and jurisdictional issues established therein.
This document is an original. If the document is submitted digitally, it is to be treated as an original within the meaning of UCP 600.
Any holder of this document is advised that information contained hereon reflects the Company's findings at the time of its intervention only and within the limits of client's instructions, if any. The Company's sole responsibility is to its Client and this document does not exonerate parties to a transaction from exercising all their rights and obligations under the transaction documents. Any unauthorized alteration, forgery or falsification of the content or appearance of this document is unlawful and offenders may be prosecuted to the fullest extent of the law.



ISCC PLUS Certificate

Certificate Number: ISCC-PLUS-Cert-DE100-11891125
SGS Germany GmbH
Europa Allee 12, D-49685 Emstek
certifies that
Sojitz (Thailand) Co., Ltd.

19th Floor, Q.House Lumpini Building, South Sathorn Rd., Tungmahamek, Sathorn 1
10120 Bangkok
THAILAND

complies with the requirements of the certification system
ISCC PLUS
(International Sustainability and Carbon Certification)

Place of the audit:
see above

This certificate is valid from 09/04/2025 to 08/04/2026

The site of the system user is certified as:
trader with storage

The scope of the certificate includes the following chain of custody options:

Emstek, 09/04/2025
Place and date of issue


Stamp, Signature

The issuing Certification Body is responsible for the accuracy of this document.
Version / Date: 1 (no adjustments) / 09/04/2025



This document is issued by the Company subject to its General Conditions of Service (www.sgs.com/terms). Attention is drawn to the limitations of liability, indemnification and jurisdictional issues established therein.
This document is an original. If the document is submitted digitally, it is to be treated as an original within the meaning of UCP 600.
Any holder of this document is advised that information contained hereon reflects the Company's findings at the time of its intervention only and within the limits of client's instructions, if any. The Company's sole responsibility is to its Client and this document does not exonerate parties to a transaction from exercising all their rights and obligations under the transaction documents. Any unauthorized alteration, forgery or falsification of the content or appearance of this document is unlawful and offenders may be prosecuted to the fullest extent of the law.



Certificate SGSCH-PEFC-COC-470021

The Organization
Sojitz (Thailand) Co., Ltd.

19th Floor, Q.House Lumpini Building, 1 South Sathorn Road, Tungmahamek, Sathorn, Bangkok 10120, Thailand

has been assessed and certified as meeting the requirements of
PEFC - Chain of Custody

PEFC ST 2002:2020 - "Chain of Custody of Forest and Tree Based Products - Requirements" - dated 14/02/2020
PEFC ST 2001:2020 - PEFC Trademarks Rules - Requirement - dated 14/02/2020.
as amended and published on www.pefc.org

For the products detailed in the scope below:
Trading of PEFC certified and PEFC controlled source Chemical pulp by using the Physical separation method including outsource process of warehousing.

This certificate is valid from 28 September 2023 until 27 September 2028 and remains valid subject to satisfactory surveillance audits.
Issue: 1 Certified since 28 September 2023
SGS Ref # TH23/00000540

This is a single certification scheme.

Authorized by
Olyve Delcan

Authorized by
Christian Kobel

SGS Société Générale de Surveillance SA
1, Place des Alpes, 1201 Geneva, Switzerland
T +41 (0)22 739 91 11 - www.sgs.com

More detailed product specifications covered by the scope of this certificate are provided in the PEFC Certificate Database <https://www.pefc.org/coc-certified>. Organizations with a valid PEFC chain of custody certification only use the PEFC Logo with unique PEFC license logo number based on PEFC Logo usage license contract issued by the PEFC Council or another entity authorized by the PEFC Council under its approval with the PEFC Logo usage rules.





This document is an authentic electronic certificate for Client business purposes use only. Printed version of the electronic certificate is permitted and will be considered as a copy. This document is issued by the Company subject to its General Conditions of certification services available on [Terms and Conditions](#) (SGS). Attention is drawn to the limitations of liability, indemnification and jurisdictional issues contained therein. This document is copyright protected and any unauthorized alteration, forgery or falsification of the content or appearance of this document is unlawful.

Page 1 / 1



New way, New value

**The Sojitz Group creates value and prosperity by
connecting the world with a spirit of integrity**